

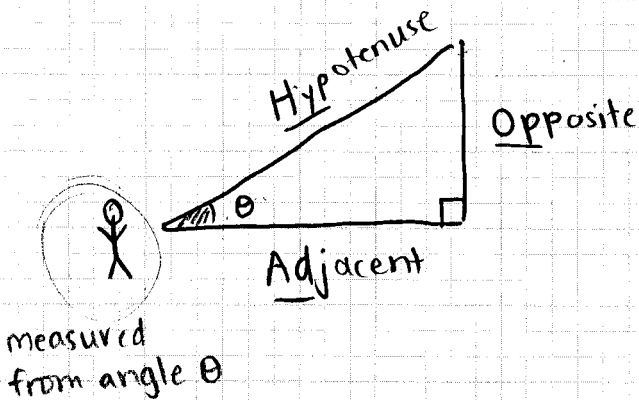
# Trig Ratios

January-08-18 9:31 AM

memory  
trick

⊗ 3 Basic trig Ratios : SOH CAH TOA

can be used to compare the side lengths on any right angle triangle.



sine

$$\sin \theta = \frac{\text{Opp}}{\text{Hyp}}$$

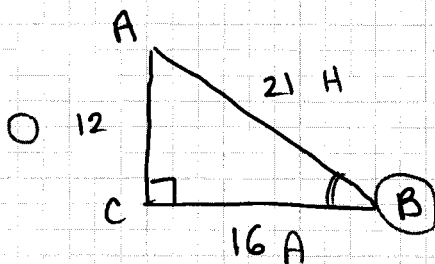
cosine

$$\cos \theta = \frac{\text{Adj}}{\text{Hyp}}$$

tangent

$$\tan \theta = \frac{\text{Opp}}{\text{Adj}}$$

Ex. Find all 3 trig ratios for angle B



$$\sin B = \frac{O}{H} = \frac{12}{21} = 0.5714$$

$$\cos B = \frac{A}{H} = \frac{16}{21} = 0.7619$$

$$\tan B = \frac{O}{A} = \frac{12}{16} = 0.75$$

⊗ Trig ratios need 4 decimal places.