

Area Review

May-06-19 8:34 AM

* Area tells us how much space a flat 2D object occupies.

* Area is a measurement - include units in the answer!

↳ The units are SQUARED ex. cm^2 , m^2 , ft^2

* SHOW YOUR WORK!

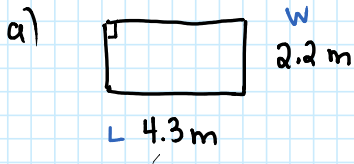
① Formula

② substitute values

③ Follow BEDMAS

④ Answer with units

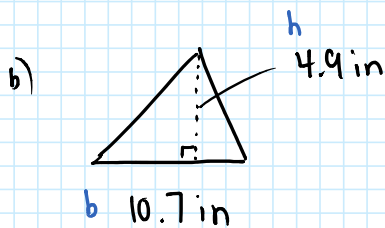
Ex. Find the area:



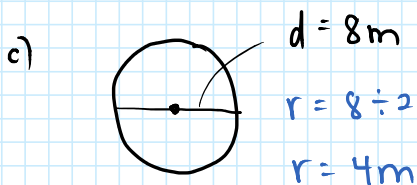
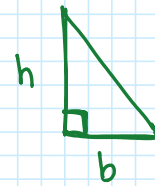
$$A = lw$$

multiply

$$A = (4.3\text{m})(2.2\text{m})$$
$$A = 9.46\text{m}^2$$



$$A = \frac{bh}{2}$$
$$A = \frac{10.7 \times 4.9}{2}$$
$$A = 26.215\text{in}^2$$



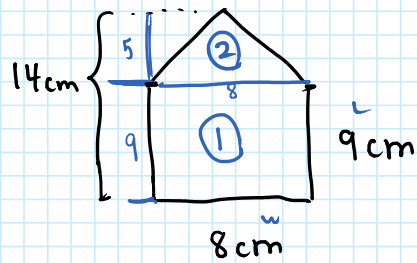
$$A = \pi r^2$$
$$A = 3.14 \times 4^2$$

BEDMAS

$$A = 3.14 \times 16$$
$$A = 50.24\text{m}^2$$

* A composite or compound shape is made from 2 or more basic shapes.

Ex. Find the area:



Strategy:

- split into basic shapes
- Find areas
- Add areas up

$$\textcircled{1} \quad A = l w$$

$$A = 9 \times 8$$

$$A = 72 \text{ cm}^2$$

$$\textcircled{2} \quad A = \frac{b \cdot h}{2}$$

$$A = \frac{8 \times 5}{2}$$

$$A = 20 \text{ cm}^2$$

Total : $72 + 20 = \boxed{92 \text{ cm}^2}$