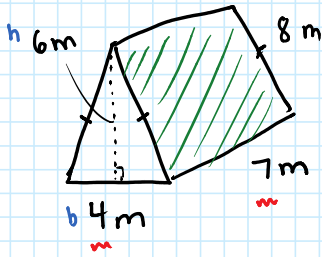


Surface Area of Triangular Prisms

May-06-19 8:35 AM

A triangular prism has 5 faces : 2 Identical triangles
3 rectangles

Ex. Find the surface area:



2 Δ :

$$A = \frac{bh}{2}$$

$$A = \frac{4 \cdot 6}{2} = 12 \text{ m}^2 \times 2 = 24 \text{ m}^2$$

L/R Rectangles :

$$A = L \times W$$

$$A = 8 \times 7$$

$$A = 56 \text{ m}^2 \times 2 = 112 \text{ m}^2$$

Bottom rectangle :

$$A = L \times W$$

$$A = 7 \times 4$$

$$A = 28 \text{ m}^2$$

$$SA = 24 + 112 + 28$$

$$SA = 164 \text{ m}^2$$